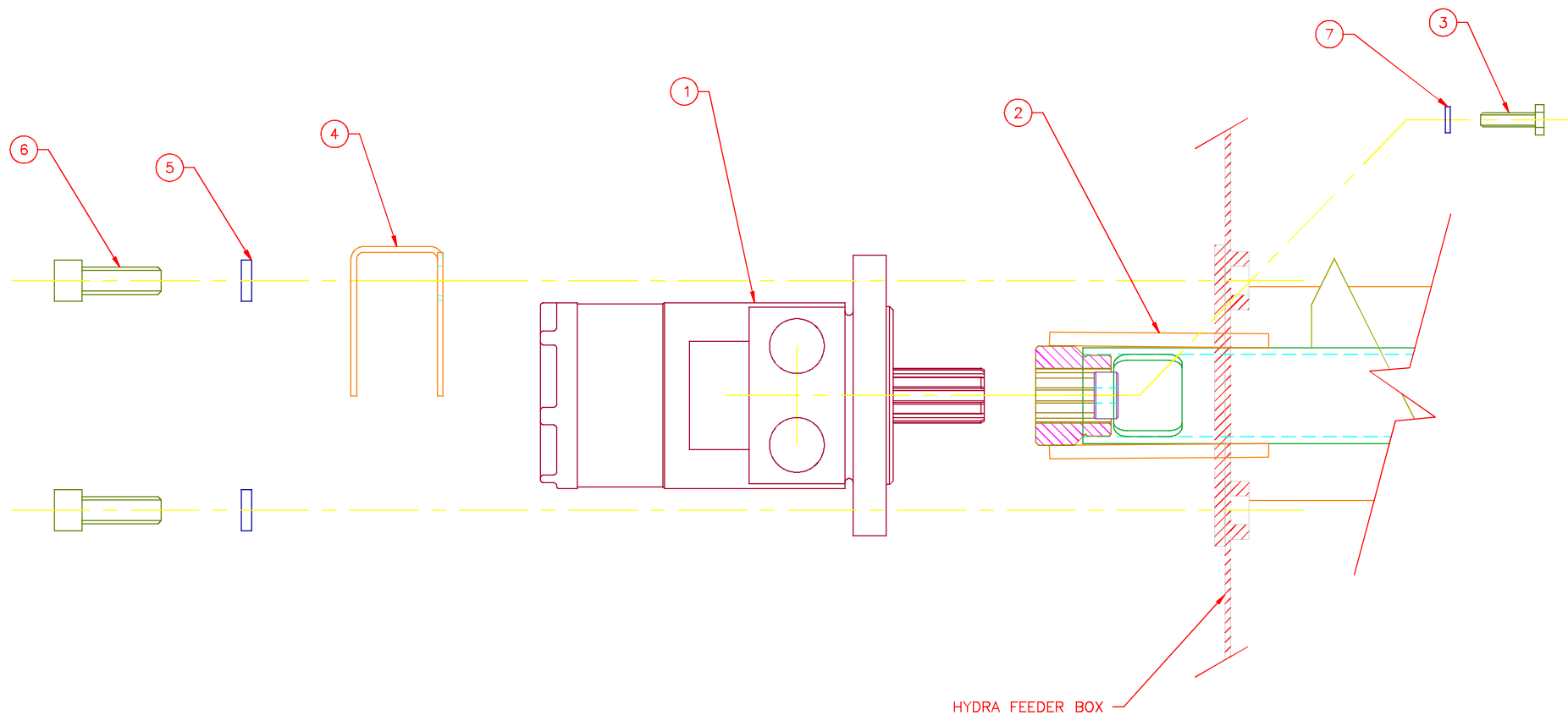


This drawing contains confidential proprietary information of Triple C, Inc. and is subject to return upon request. The furnishing of this drawing is not to be construed as the grant of any license, express or implied, to manufacture, have manufactured, use or sell the structures shown hereon.



ITEM	MATERIAL \ DESCRIPTION	LENGTH	QTY	DRAWING NO.
1	HF 158-3653 MOTOR		1	
2	HF12-47 AUGER		1	30-1209
3	BO 1/4x1HCS		1	
4	HF21-49		1	30-2213
5	BO 1/2LW		2	
6	BO 1/21-1/2 SHCS		2	
7	BO 1/4LW		1	

TRIPLE C
INC.

P.O. BOX 248, SARETHA, KS 66534
(785) 284-3674 FAX (785) 284-3931

TOLERANCES
Unless otherwise specified
XX .010
XXX .005
XXXX .0005
X/X 1/32
ANGLE 0°30'

SHEET
OF 1

SCALE:
1:2

DRAWN BY:
CHRIS ABERLE
08/28/06

TITLE:
MOTOR/AUGER
MOUNT, HYDRA FEEDER

ASSEMBLY NUMBER:
HF12-58

DRAWING NUMBER:
30-1219

REV